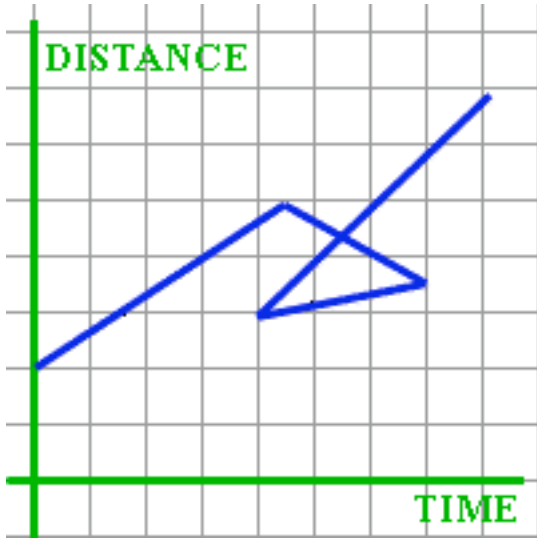


Possible or Crazy?

Examine the following graphs. Tell me if they are possible or not. If not possible, explain why not. If possible, write a short (2-3 sentence) story about each graph.



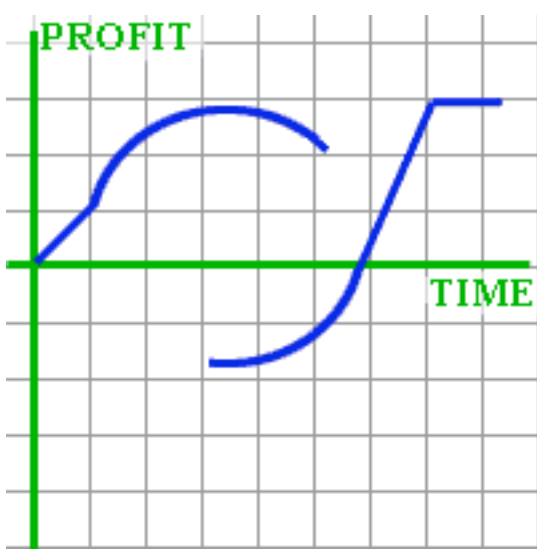
Possible or not? _____

Why isn't it possible or what is a story that would work for this graph if it is possible?



Possible or not? _____

Why isn't it possible or what is a story that would work for this graph if it is possible?



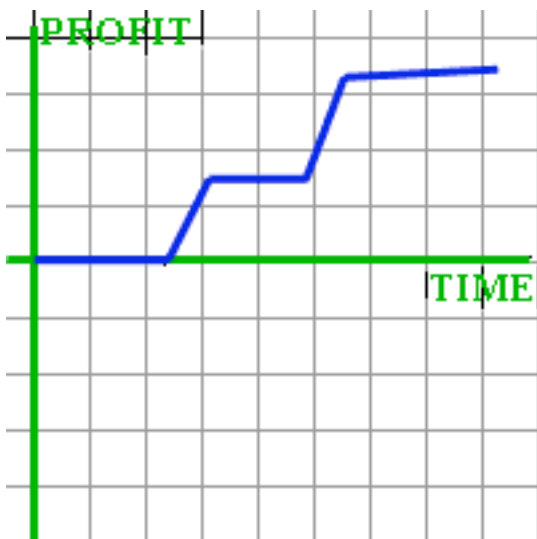
Possible or not? _____

Why isn't it possible or what is a story that would work for this graph if it is possible?



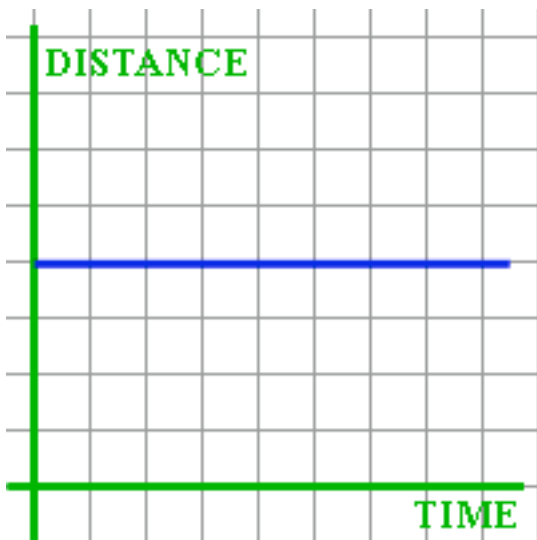
Possible or not? _____

Why isn't it possible or what is a story that would work for this graph if it is possible?



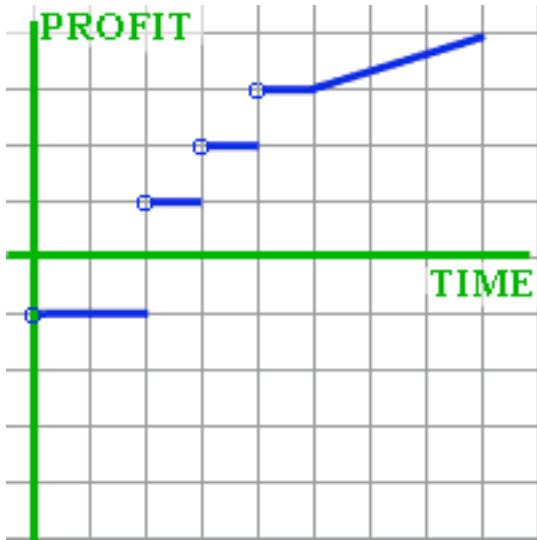
Possible or not? _____

Why isn't it possible or what is a story that would work for this graph if it is possible?



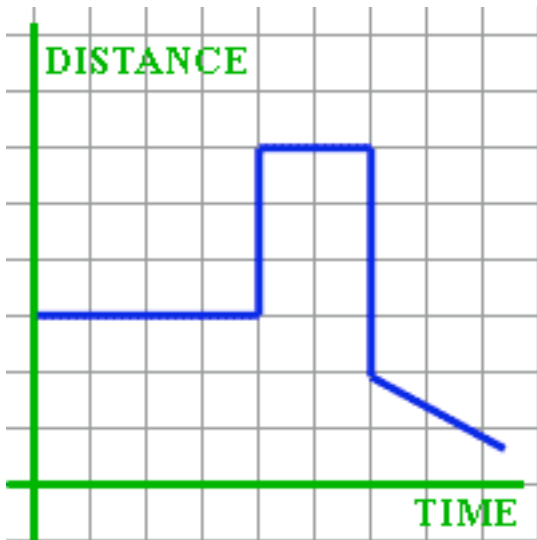
Possible or not? _____

Why isn't it possible or what is a story that would work for this graph if it is possible?



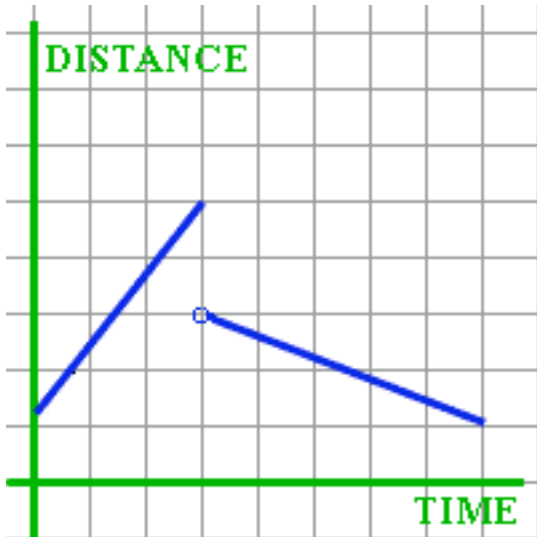
Possible or not? _____

Why isn't it possible or what is a story that would work for this graph if it is possible?



Possible or not? _____

Why isn't it possible or what is a story that would work for this graph if it is possible?



Possible or not? _____

Why isn't it possible or what is a story that would work for this graph if it is possible?
